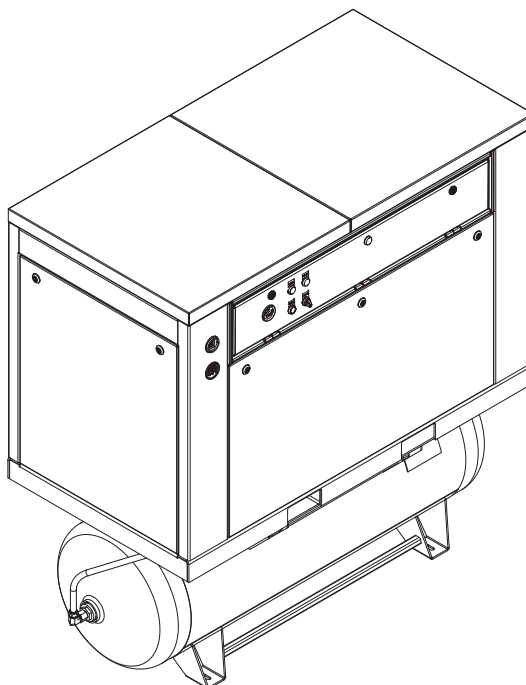


RECIPROCATING AIR COMPRESSOR



QE5-15A (5-7.5HP)



Product Parts Information



Save These Instructions



Edition A
August 2023
CCN 47794360



Ingersoll- Rand Company

1-800-AIR SERV

(1-800-247-7378)

irrecip.com

CONSUMER INFORMATION SHEET

Thank you for purchasing an Ingersoll-Rand product. We trust that it will offer you many years of trouble-free service. If you encounter any problems or need assistance, please refer to the information provided in this sheet.

INSTALLATION, OPERATION, MAINTENANCE & TROUBLESHOOTING ISSUES

Read the owner's manual first. Often this will clarify your understanding. If you still have problems, please call the toll-free hotline.

MISSING PARTS

If parts are missing call the toll free hotline. Have the serial number, part number, model number and parts list (with missing parts circled) handy when you call. Your parts will be shipped immediately.

SHIPPING DAMAGE OR DEFECTIVE PARTS

Each new product is inspected and in good condition prior to the shipment from the factory. If your product was received in a condition that was less than satisfactory, or if you discover a defect that requires service or adjustment by qualified personnel, please contact your nearest authorized service representative.

DO NOT RETURN THE PRODUCT TO YOUR RETAILER!

NOTE REGARDING EXTENSION CORDS

To avoid power loss and overheating, use additional air hose instead of an extension cord.

PARTS & SERVICE HOTLINE:

1-800-AIR SERV

(1-800-247-7378)

Only allow **Ingersoll Rand** trained Technicians to perform maintenance on this product. For additional information contact **Ingersoll Rand** factory or nearest Distributor.

The use of other than genuine **Ingersoll Rand** replacement parts may result in safety hazards, decreased performance and increased maintenance and may invalidate all warranties.

Refer all communications to the nearest **Ingersoll Rand** Office or Distributor.

Table of Contents

PARTS ORDERING INFORMATION	4
RETURN GOODS POLICY	4
DISPOSAL	4
RECOMMENDED PARTS	5
CRANKCASE GROUP.....	7
CRANKSHAFT GROUP	8
LOW PRESSURE AND HIGH PRESSURE ROD/PISTON GROUP	9
CYLINDER GROUP	11
HIGH PRESSURE VALVE AND LOW PRESSURE VALVE PLATE ASSEMBLY	13
TUBING AND CONTROL GROUP	15
HORIZONTAL PACKAGE, SIMPLEX.....	17
AFTERCOOLER ASSEMBLY	21
FAN ASSEMBLY.....	23
TANK DRAINS.....	25
CONTROL GROUP, START/STOP.....	27
BACK PANEL ASSEMBLY	29
CONTROL GROUP, GAUGES	31
TRANSMISSION GROUP	33
BELT GUARD.....	35
ENCLOSURE FRAME	36
ENCLOSURE PANELS	37

PARTS ORDERING INFORMATION

These products are designed and constructed to provide long, trouble-free service. In time it may be necessary to order and install new parts to replace those that have been subjected to wear.

For your convenience and future reference it is recommended that the following information be recorded.

Model Number _____

Serial Number _____

Date Purchased _____

When ordering replacement parts, please specify the following:

1. Complete model number and serial number as it appears on the data (name) plate.
2. Part number(s) and part description as shown in this manual.
3. Quantity required.

NOTICE

General Information!

- **Continuing improvement and advancement of design may cause changes to this equipment which are not included in this manual. Manuals are periodically revised to incorporate changes. Always check the manual edition number on the front cover for the latest issue.**
- **Sections of this manual may not apply to your product.**
- **Using other than genuine Ingersoll Rand replacement parts may invalidate the warranty.**

RETURN GOODS POLICY

Ingersoll Rand will not accept any returned goods for warranty or service work unless prior arrangements have been made and written authorization has been provided from the location where the goods were purchased.

Products which have been modified without **Ingersoll Rand** approval, mishandled or misused will not be repaired or replaced under warranty.

DISPOSAL



When the life of the product has expired, it is recommended that it be disassembled, degreased and parts separated as to materials so that they may be recycled.

Refer all communications to the nearest **Ingersoll Rand** Office or Distributor.

RECOMMENDED PARTS

Table 1. SERVICE/MAINTENANCE KITS

START-UP KITS	
CCN	DESCRIPTION
32305880	KIT, COMPRESSOR START-UP (2340 AND 2475 ELECTRIC PKGS)

STEP SAVER KITS	
32301426	KIT, VALVE GASKET - 2475
32301517	KIT, RING - 2475
32301509	KIT, BEARING & ROD - 2475
32301434	KIT, GASKET - 2475

RECOMMENDED SPARES	
32247884	GASKET, FRAME END COVER (1)
32247850	O-RING, OIL FILLER PLUG (1)
32499923	L SEAL (1)
32247876	GASKET, SHAFT END COVER (1)
32247868	GASKET, CYLINDER/FLANGE (2)
32246878	O-RING, VALVE PLATE - HIGH PRESSURE (1)
32247926	GASKET, AIRHEAD - HIGH PRESSURE (1)
32248197	GASKET, VALVE PLATE - LOW PRESSURE (1)
32248189	GASKET, AIRHEAD - LOW PRESSURE (1)

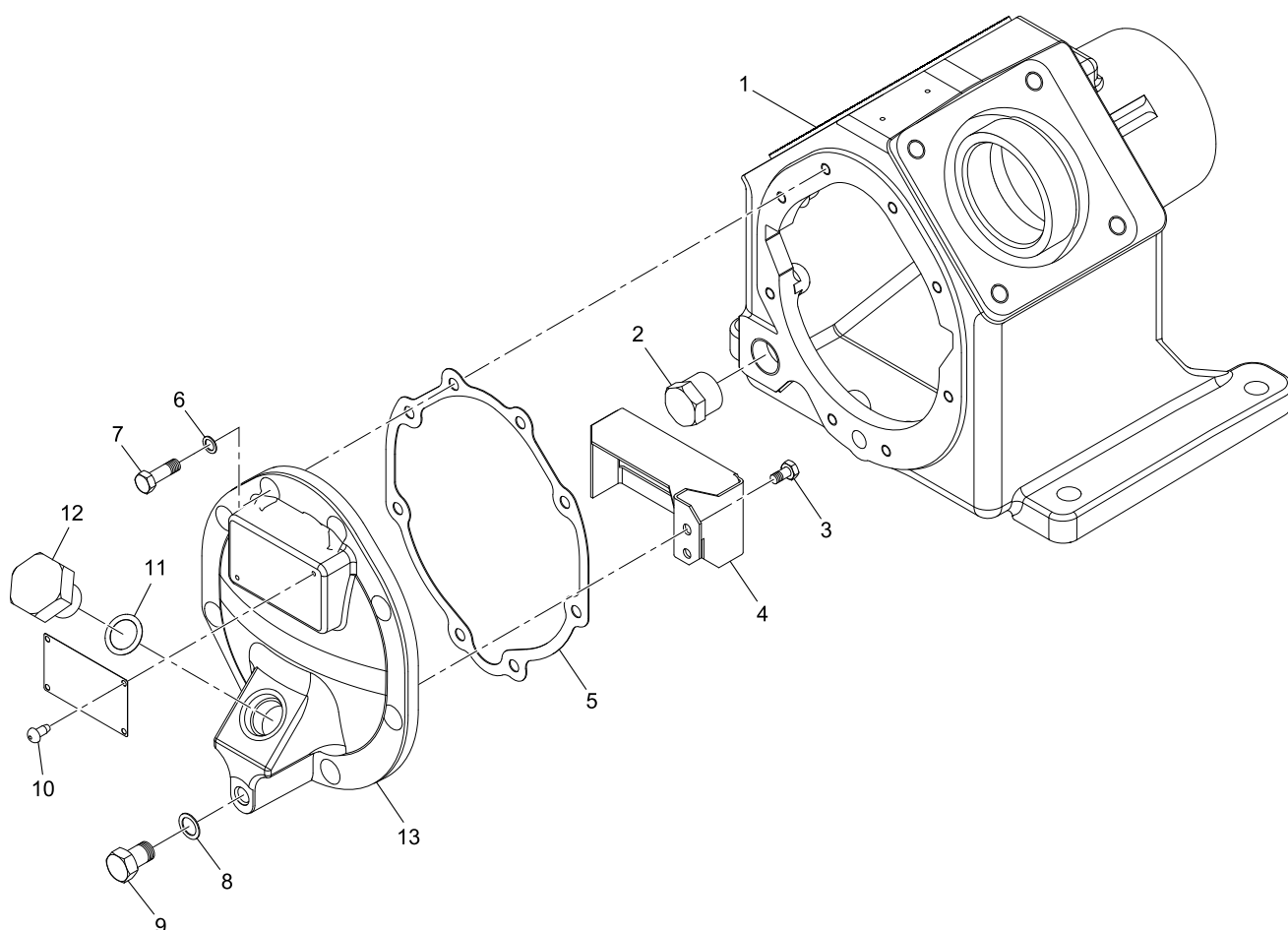
REBUILD KITS	
32496598	PISTON, AIR - COMPLETE - 2.5" HIGH PRESSURE (1)
32496564	PISTON, AIR - COMPLETE - 4" - LOW PRESSURE (1)
32310799	ASSEMBLY, VALVE PLATE - HIGH PRESSURE - 2475 (1)
32248205	ASSEMBLY, VALVE PLATE - LOW PRESSURE - 2475 (1)
32307910	HIGH PRESSURE RING SET - 2475 (1)
32307928	LOW PRESSURE RING SET - 2475 (1)
32293565	CRANKSHAFT ASSEMBLY

COMPRESSOR LUBRICANT	
38436721	LUBRICANT, ALL SEASON SELECT - LITER
38436739	LUBRICANT, ALL SEASON SELECT - CASE OF 12 LITERS

RECOMMENDED PARTS**Table 2. ACCESSORIES**

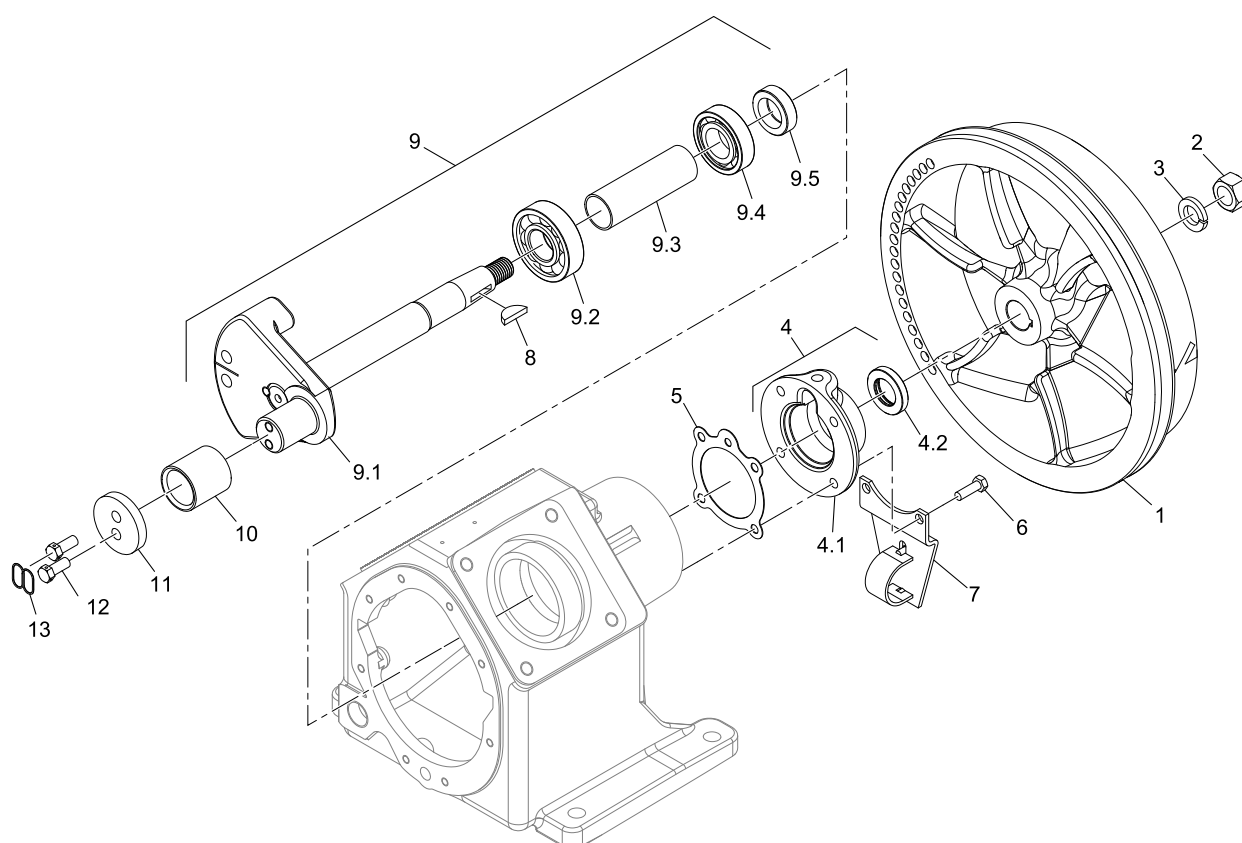
FLEX HOSES	
CCN	DESCRIPTION
32323586	HOSE, FLEX — ½ X 11
38335295	HOSE, FLEX — ½ X 36
38338778	HOSE, FLEX — ½ X 72
32323594	HOSE, FLEX — ¾ X 13
38323309	HOSE, FLEX — ¾ X 24
38335303	HOSE, FLEX — ¾ X 36
38338638	HOSE, FLEX — ¾ X 72
32323602	HOSE, FLEX — 1 X 14
38334033	HOSE, FLEX — 1 X 24
38335311	HOSE, FLEX — 1 X 36
38338646	HOSE, FLEX — 1 X 72
32323610	HOSE, FLEX—1-½ X 18
38323317	HOSE, FLEX—1-½ X 20-½
38323325	HOSE, FLEX—1-½ X 24

CRANKCASE GROUP



Item	Part No.	Description	Qty.
1	32247728	CRANKCASE	1
2	95200333	PLUG	1
3	95053070	SCREW	2
4	32295222	BAFFLE OIL LEVEL SWITCH	1
5	32247884	GASKET FRAME END COVER	1
6	95674651	WASHER COPPER	1
7	95105250	SCREW	12
8	95674701	WASHER COPPER	9
9	95053526	SCREW	1
10	30841456	STUD, DRIVE	4
11	32247850	O-RING, OIL FILL PLUG	1
12	81291767	PLUG, OIL FILL	1
13	32247751	CRANKCASE COVER	1

CRANKSHAFT GROUP

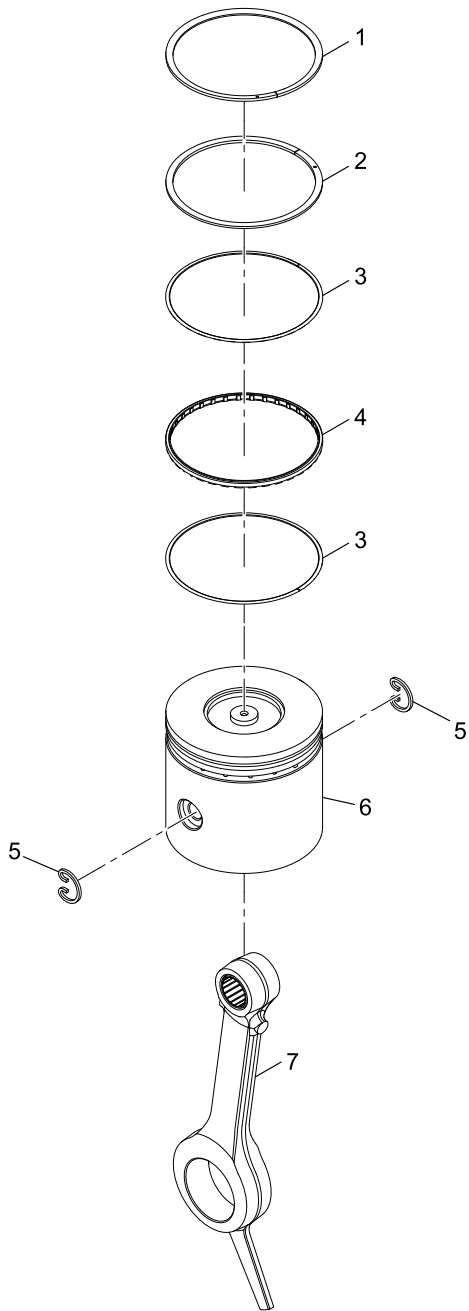


Item	Part No.	Description	Qty.
1	24556557	BELT WHEEL	1
2	95076816	NUT	1
3	95081808	WASHER	1
4	97331060	COVER ASSEMBLY, SHAFT END	1
4.1*	32247785	COVER, SHAFT END	1
4.2	32499923	SEAL	1
5	32247876	GASKET, SHAFT END COVER	1
6	95105250	SCREW	12
7	23951155	ASSEMBLY BRACKET AND CLAMP	1
8	95433173	KEY, WOODRUFF	1
9	32293565	CRANKSHAFT ASSEMBLY	1
9.1*	32184608	CRANKSHAFT DISC ASSEMBLY	1
9.2*	32248122	BEARING BALL	1
9.3*	32006496	SPACER BEARING	1
9.4*	95134185	BEARING BALL	1
9.5*	37127669	RING BEARING RETAINER	1
10	30210199	BUSHING, CRANK PIN	1
11	30210298	DISC CRANK PIN	1
12	30278667	SCREW	2
13	90799289	WIRE LOCKING	1

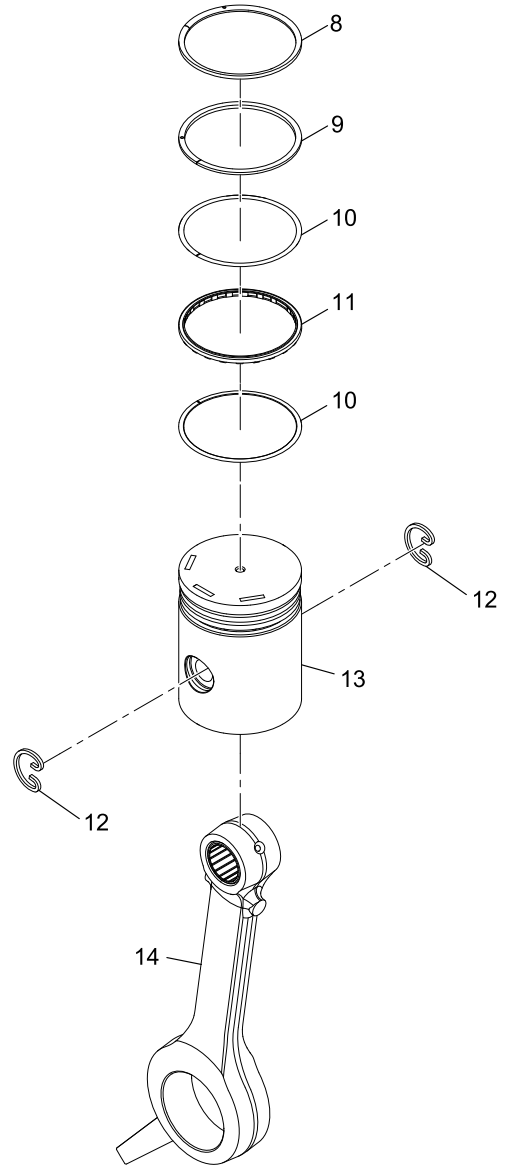
Note: * Not sold separately, Repair Kits

LOW PRESSURE AND HIGH PRESSURE ROD/PISTON GROUP

Low Pressure



High Pressure



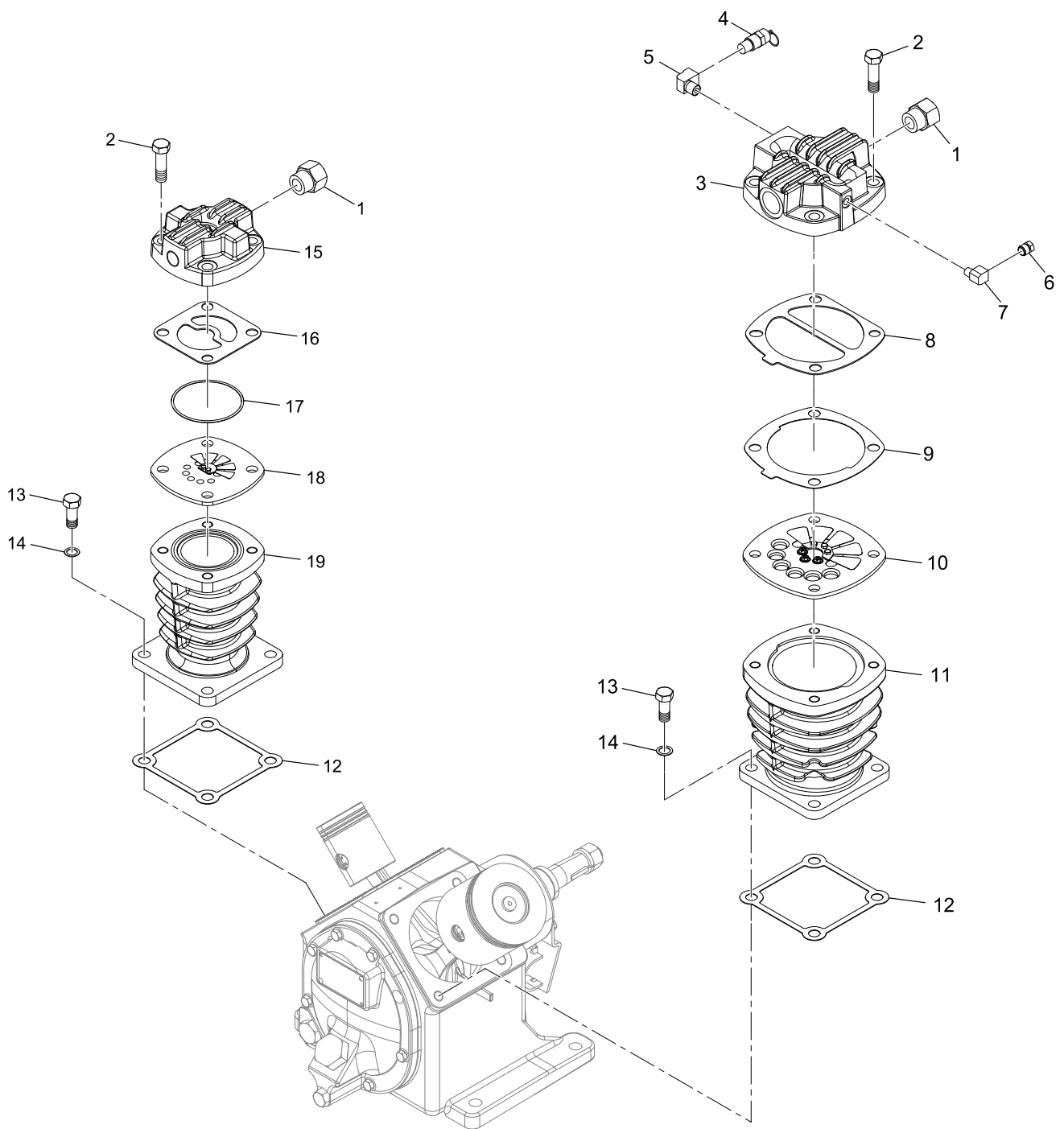
LOW PRESSURE AND HIGH PRESSURE ROD/PISTON GROUP

Item	Part No.	Description	Qty.
LOW PRESSURE PISTON/ROD GROUP			
1*	32248049	RING, COMPRESSION	1
2*	32248056	RING, SCRAPER	1
3*	32248072	RING, OIL CONTROL SPACER	2
4*	32248064	RING, OIL CONTROL	1
5	30298020	PISTON PIN LOCK RING	2
6	32293516	PISTON/PIN ASSEMBLY	1
7*	32004152	CONNECTING ROD	1

HIGH PRESSURE PISTON/ROD GROUP			
8*	32248080	RING, COMPRESSION	1
9*	32248098	RING, SCRAPER	1
10*	32248114	RING, OIL CONTROL SPACER	2
11*	32248106	RING, OIL CONTROL	1
12	30298020	PISTON PIN LOCK RING	2
13	32293532	PISTON/PIN ASSEMBLY	1
14*	32004152	CONNECTING ROD	1

Note: * Not sold separately, see repair parts

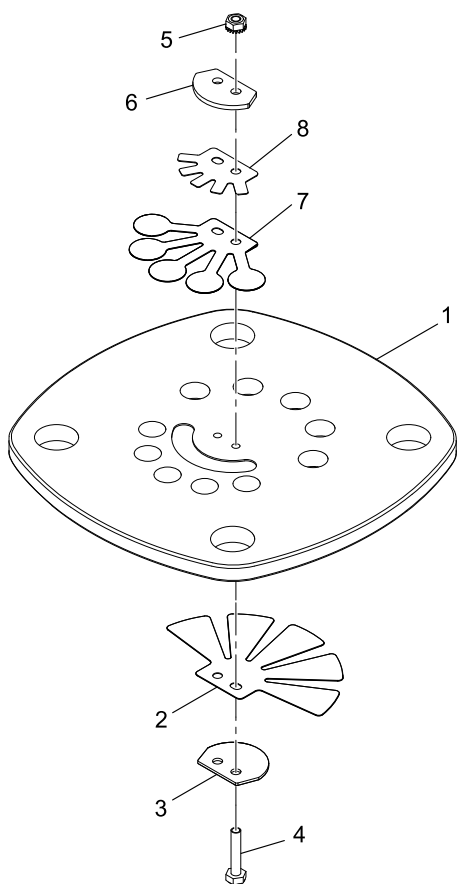
CYLINDER GROUP



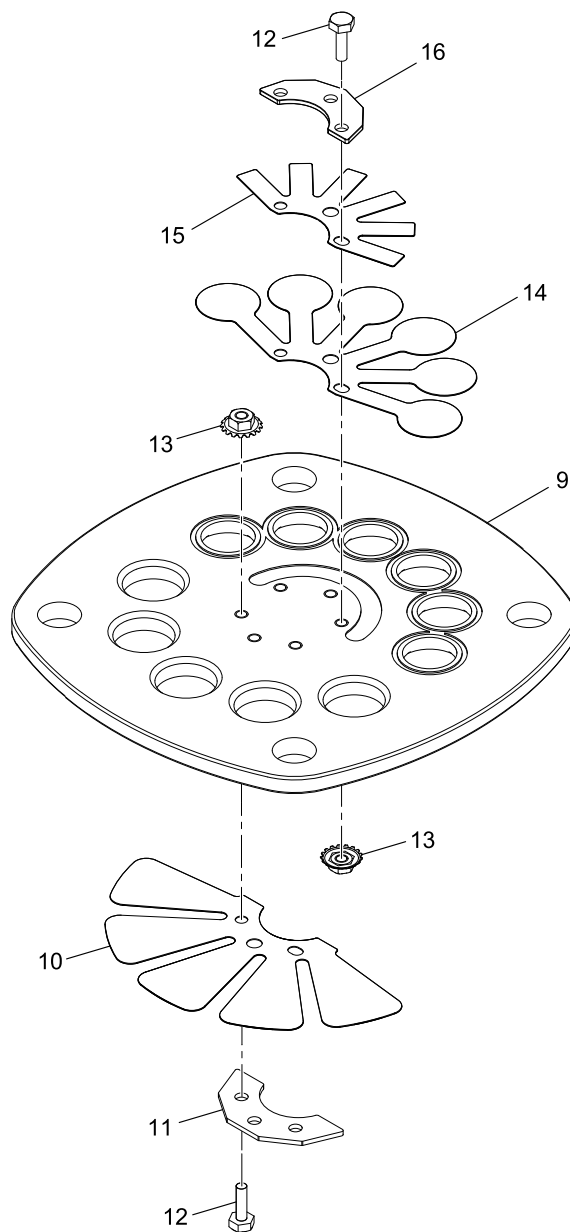
CYLINDER GROUP

Item	Part No.	Description	Qty.
1	95083275	CONNECTOR	2
2	95104188	SCREW	8
3	32293557	CYLINDER HEAD, LP	1
4	72062185	VALVE SAFETY	1
5	37143542	ELBOW	1
6	32247892	BREATHER, TUBE ASSEMBLY	1
7	95031860	ELBOW	1
8	32248189	GASKET, VP HEAD LP	1
9	32248197	GASKET	1
10	32248205	VALVE, PLATE ASSEMBLY, LP	1
11	32293540	CYLINDER	1
12	32247868	GASKET	2
13	95053567	SCREW	8
14	95674701	WASHER, COPPER	8
15	32247827	CYLINDER HEAD, HP	1
16	32247926	GASKET, HEAD, HP	1
17	32246878	O-RING	1
18	32310799	VALVE, PLATE ASSEMBLY, HP	1
19	32247652	CYLINDER	1

HIGH PRESSURE VALVE AND LOW PRESSURE VALVE PLATE ASSEMBLY



HIGH PRESSURE VALVE PLATE ASSEMBLY



LOW PRESSURE VALVE PLATE ASSEMBLY

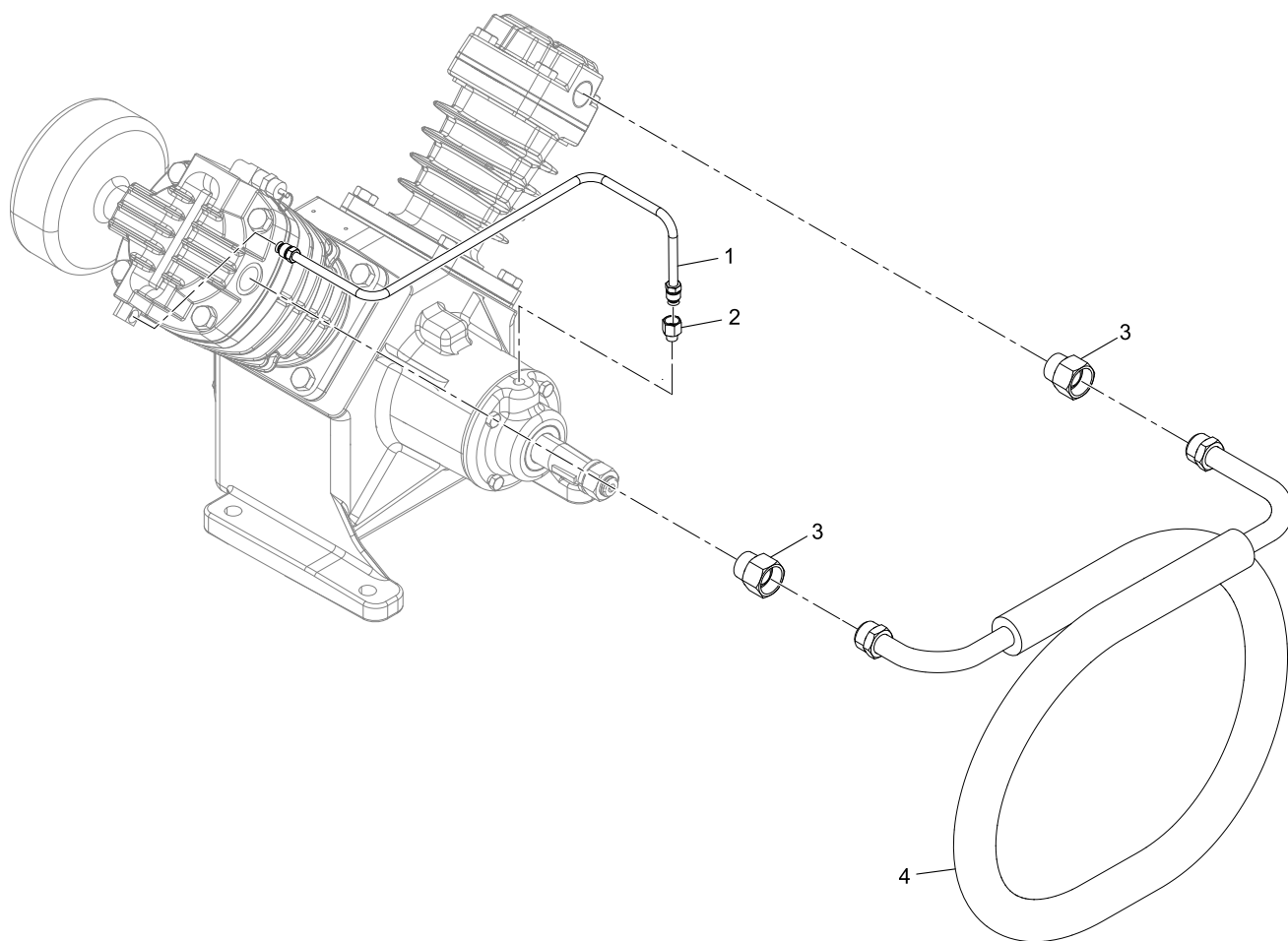
HIGH PRESSURE VALVE AND LOW PRESSURE VALVE PLATE ASSEMBLY

Item	Part No.	Description	Qty.
32310799		HIGH PRESSURE VALVE PLATE ASSEMBLY	
1*	-	PLATE, VALVE - HIGH PRESSURE	1
2	32236671	VALVE, FINGER - INLET	1
3	32297343	RETAINER, VALVE HP	1
4	97511042	SCREW, HEX HEAD - M3 X 16	2
5	97511059	NUT, HEX - M3 WITH LOCKWASHER	2
6	32295461	RETAINER, FINGER VALVE - DISCHARGE	1
7	32241010	VALVE, FINGER - DISCHARGE	1
8	32295479	VALVE, DAMPER - DISCHARGE	1

32248205		LOW PRESSURE VALVE PLATE ASSEMBLY	
9*	-	PLATE, VALVE - LOW PRESSURE	1
10	32248130	VALVE, FINGER - INLET	1
11	32248148	RETAINER, FINGER VALVE - INLET	1
12	32247512	SCREW, HEX HEAD - M4 X 12	6
13	47638648001	NUT, HEX - M4 WITH LOCKWASHER	6
14	32248155	VALVE, FINGER - DISCHARGE	1
15	32294464	VALVE, DAMPER - DISCHARGE	1
16	32248163	VALVE, RETAINER - DISCHARGE	1

Note: * Not sold separately

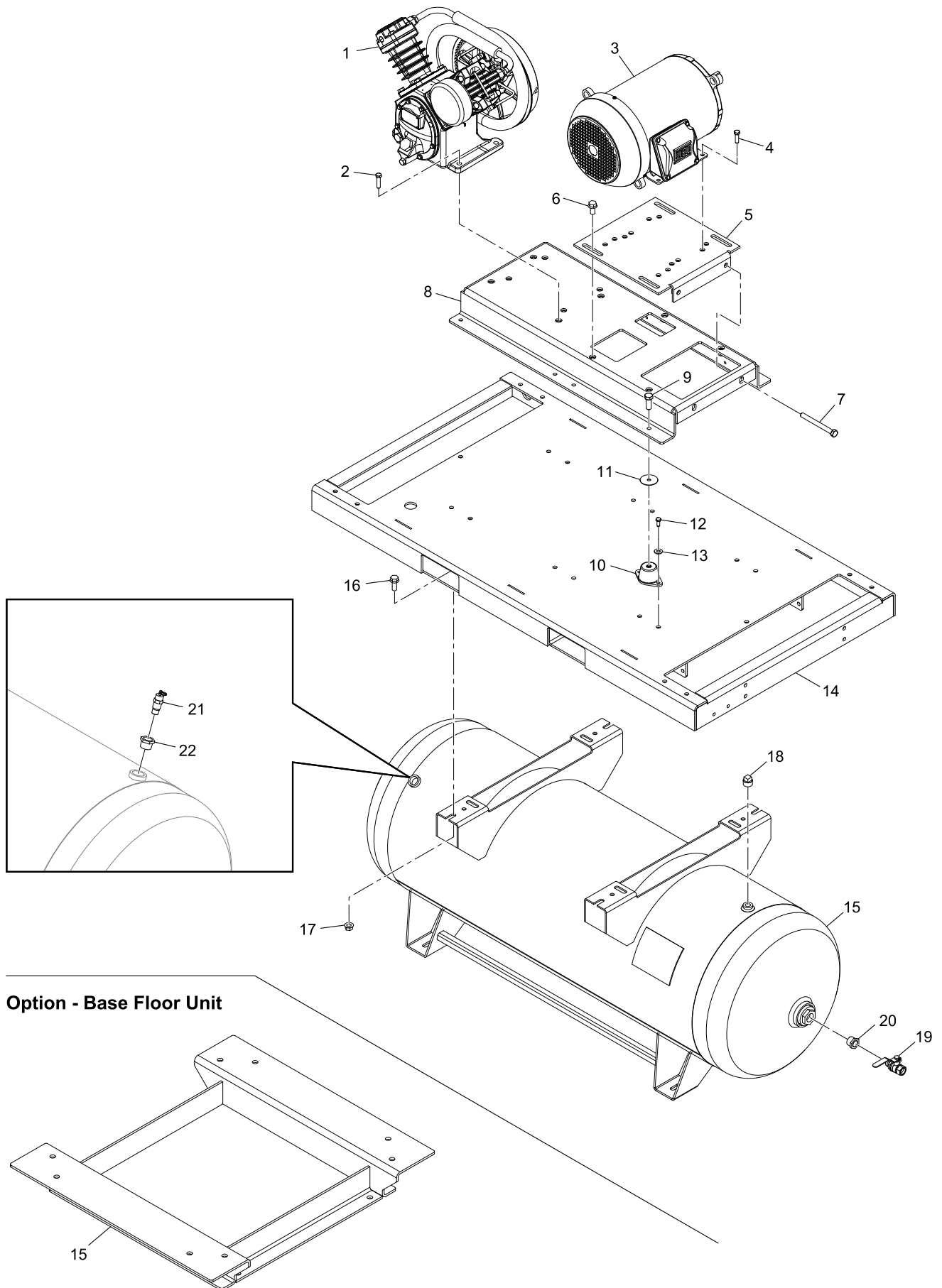
TUBING AND CONTROL GROUP



TUBING AND CONTROL GROUP

Item	Part No.	Description	Qty.
1	32247892	BREATHER TUBE	1
2	95082483	CONNECTOR	1
3	95083275	CONNECTOR	2
4	32499196	INTERCOOLER	1

HORIZONTAL PACKAGE, SIMPLEX



HORIZONTAL PACKAGE, SIMPLEX

Item	Part No.	Description	Qty.
1*	-	BARE, 2475	1
2	95114476	SCREW	4
3	See Table 3, p. 19 & Table 4, p. 20	MOTOR	1
4	95043766	SCREW	4
5	307CAS285	BASE, MOTOR	1
6	75LM135	SCREW	4
7	37177656	SCREW	2
8	306CAS285	BASE-SUB MOTOR, COMPRESSOR	1
9	39128483	SCREW	4
10	302CAS365	ISOLATOR, VIBRATION - 5HP	4
	303CAS365	ISOLATOR, VIBRATION - 7.5HP	4
11	32285892	WASHER, FENDER	4
12	32164634	SCREW	8
13	95064671	WASHER	8
14	305CAS285	BASE	1
15	24246035	RECEIVER, 80 GAL, 200 PSI	1
	311CAS285	BASE, FLOOR UNIT, OPTION	1
16	96704226	SCREW	4
17	96752555	NUT	4
18	32179004	PLUG	2
19	32223588	VALVE, BALL	1
20	96966874	BUSHING, PIPE	1
21	39588074	VALVE, PRESSURE RELIEF, 200 PSIG	1
22	95953949	BUSHING, PIPE	1

Note: * Not sold separately

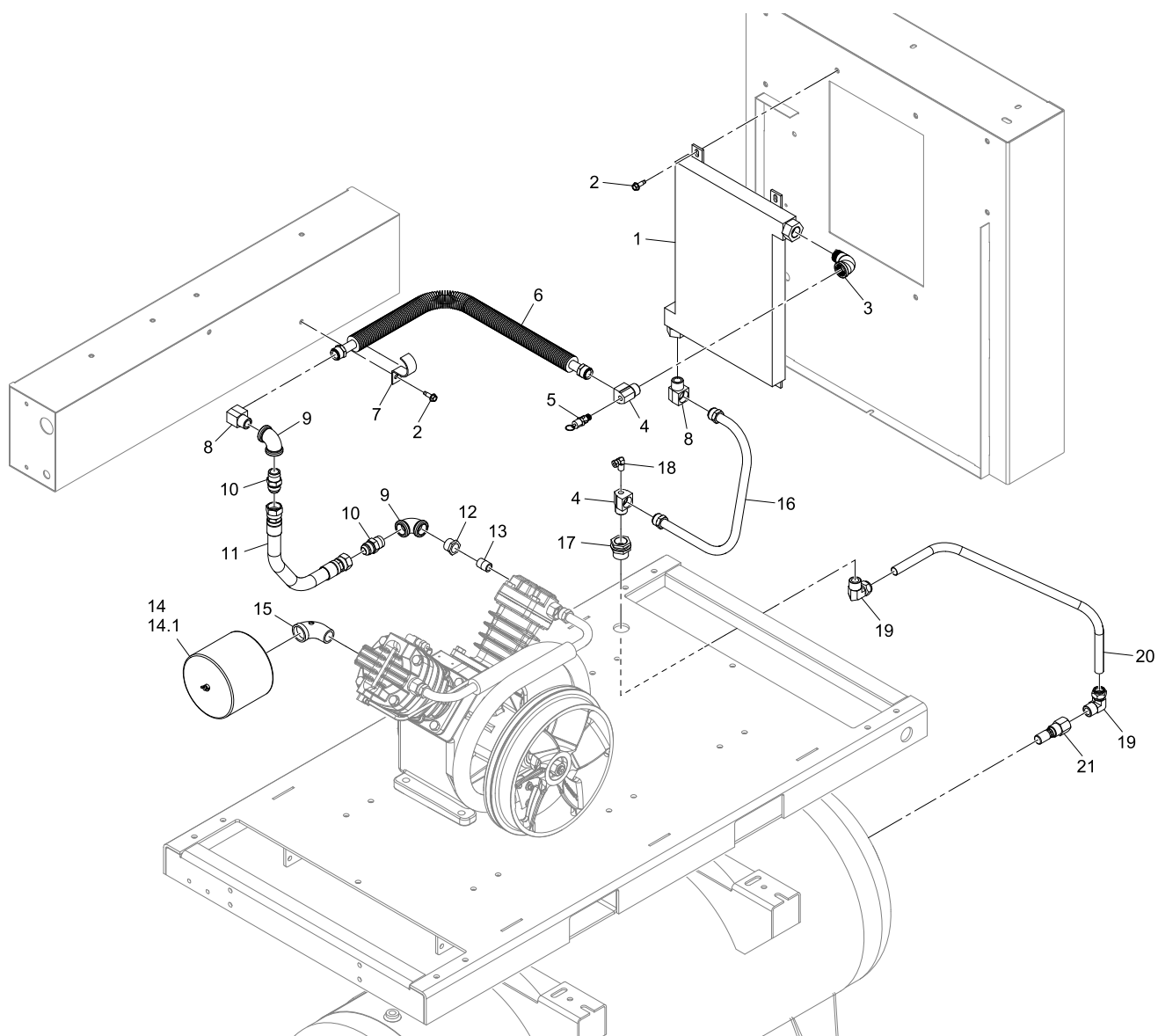
HORIZONTAL PACKAGE, SIMPLEX**Table 3. Alternate Part Numbers - 5 HP Motor's**

Application	Motor (#3)
5HP, 575V, 60HZ, 3PH, ODP	47224829
5HP, 230-460V, 60HZ, 3PH, ODP	47225479
5HP, 200V, 60HZ, 3PH, ODP	47226246
5HP, 230V, 60HZ, 1PH, ODP	32288631
5HP, 208V, 60HZ, 1PH, ODP	32065526
5HP, 575V, 60HZ, 3PH, TEFC	47225503
5HP, 230-460V, 60HZ, 3PH, TEFC	47225511
5HP, 200V, 60HZ, 3PH, TEFC	47226378
5HP, 230V, 60HZ, 1PH, TEFC	32038101
5HP, 208V, 60HZ, 1PH, TEFC	32038143
5HP, 200-400V, 50HZ, 3PH, ODP	47225545
5HP, 200-400V, 50HZ, 3PH, TEFC	47225552

HORIZONTAL PACKAGE, SIMPLEX**Table 4. Alternate Part Numbers - 7.5 HP Motor's**

Application	Motor (#3)
7.5HP, 575V, 60HZ, 3PH, ODP	47666566001
7.5HP, 230-460V, 60HZ, 3PH, ODP	47666564001
7.5HP, 200V, 60HZ, 3PH, ODP	47666565001
7.5HP, 230V, 60HZ, 1PH, ODP	23172604
7.5HP, 575V, 60HZ, 3PH, TEFC	47225008
7.5HP, 230-460V, 60HZ, 3PH, TEFC	47225552
7.5HP, 200V, 60HZ, 3PH, TEFC	47226386
7.5HP, 230V, 60HZ, 1PH, TEFC	32288896
7.5HP, 200-400V, 50HZ, 3PH, ODP	24887218
7.5HP, 200-400V, 50HZ, 3PH, TEFC	47225602

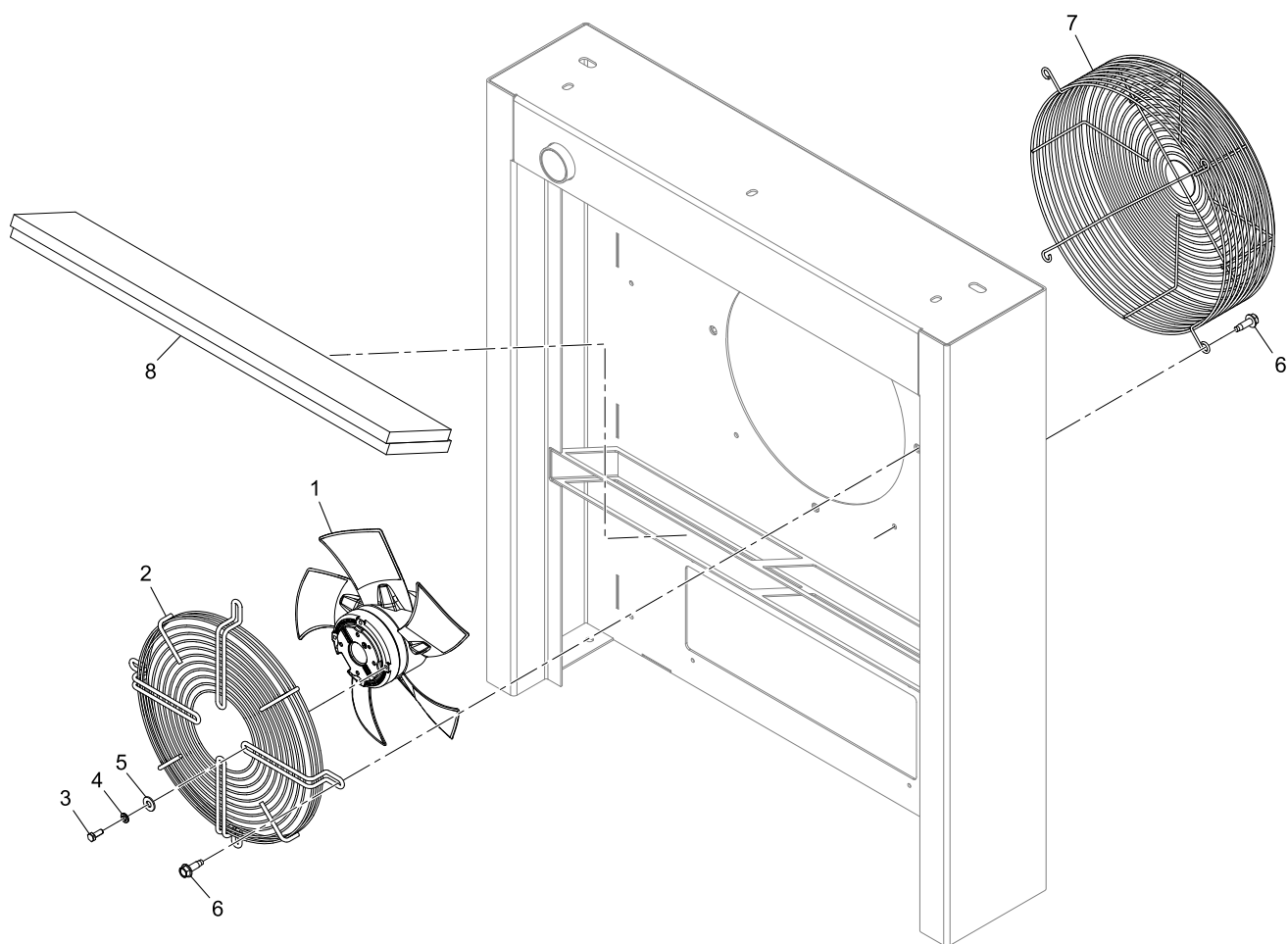
AFTERCOOLER ASSEMBLY



AFTERCOOLER ASSEMBLY

Item	Part No.	Description	Qty.
1	BA-1000	AFTERCOOLER	1
2	97170849	SCREW	5
3	M2285	FITTING, ELBOW	1
4	32145088	ELBOW	2
5	32174286	PRESSURE RELIEF VALVE	1
6	301CAS292	TUBE, AFTERCOOLER	1
7	M3478	CLAMP, PIPE	1
8	95031761	ELBOW	2
9	64C18G	ELBOW	2
10	95937512	CONNECTOR	2
11	VP1102311	HOSE	2
12	95098372	BUSHING	1
13	95934279	NIPPLE	1
14	32170953	FILTER	1
14.1	32165466	ELEMENT, FILTER - 4 MICRON	1
15	300CAS498	FITTING, ELBOW	1
16	47772770001	TUBE, DISCHARGE	1
17	64EB1027	COUPLING, PIPE	1
18	32311060	ELBOW	1
19	95937637	ELBOW	2
20	47772767001	TUBE, DISCHARGE	1
21	85582112	VALVE, CHECK	1
BASE FLOOR UNIT (OPTIONAL)			
21	85582112	VALVE, CHECK	1

FAN ASSEMBLY

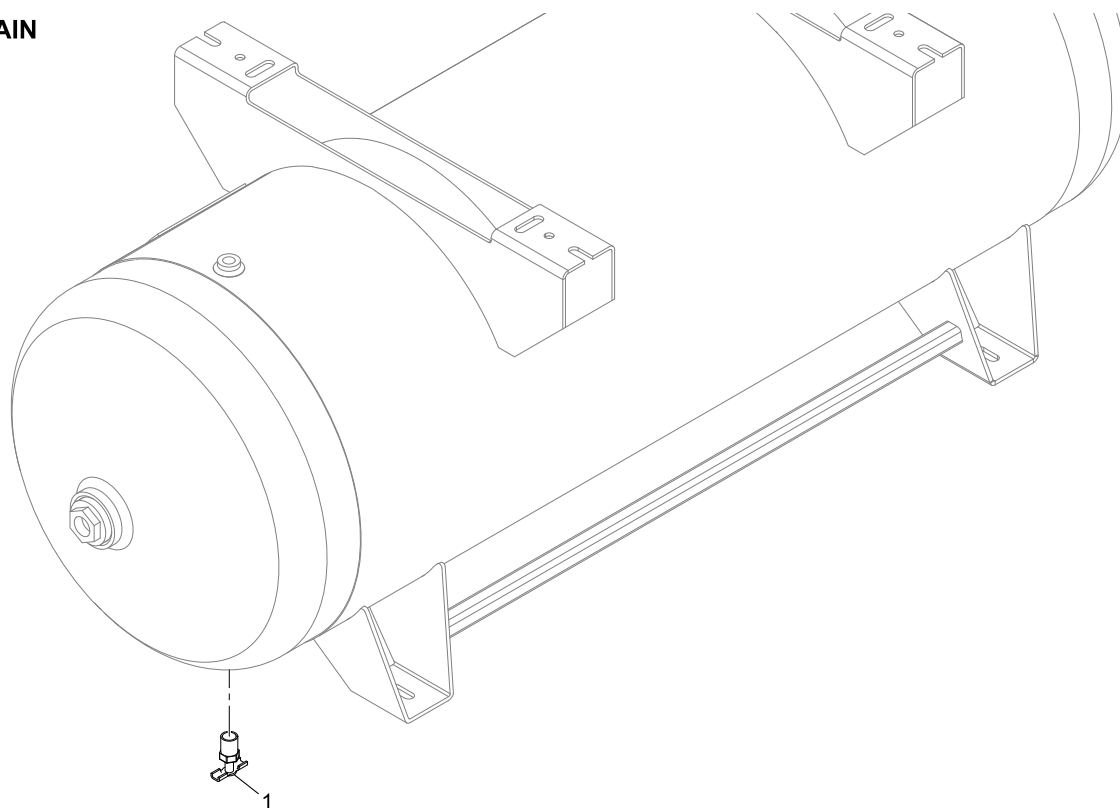


FAN ASSEMBLY

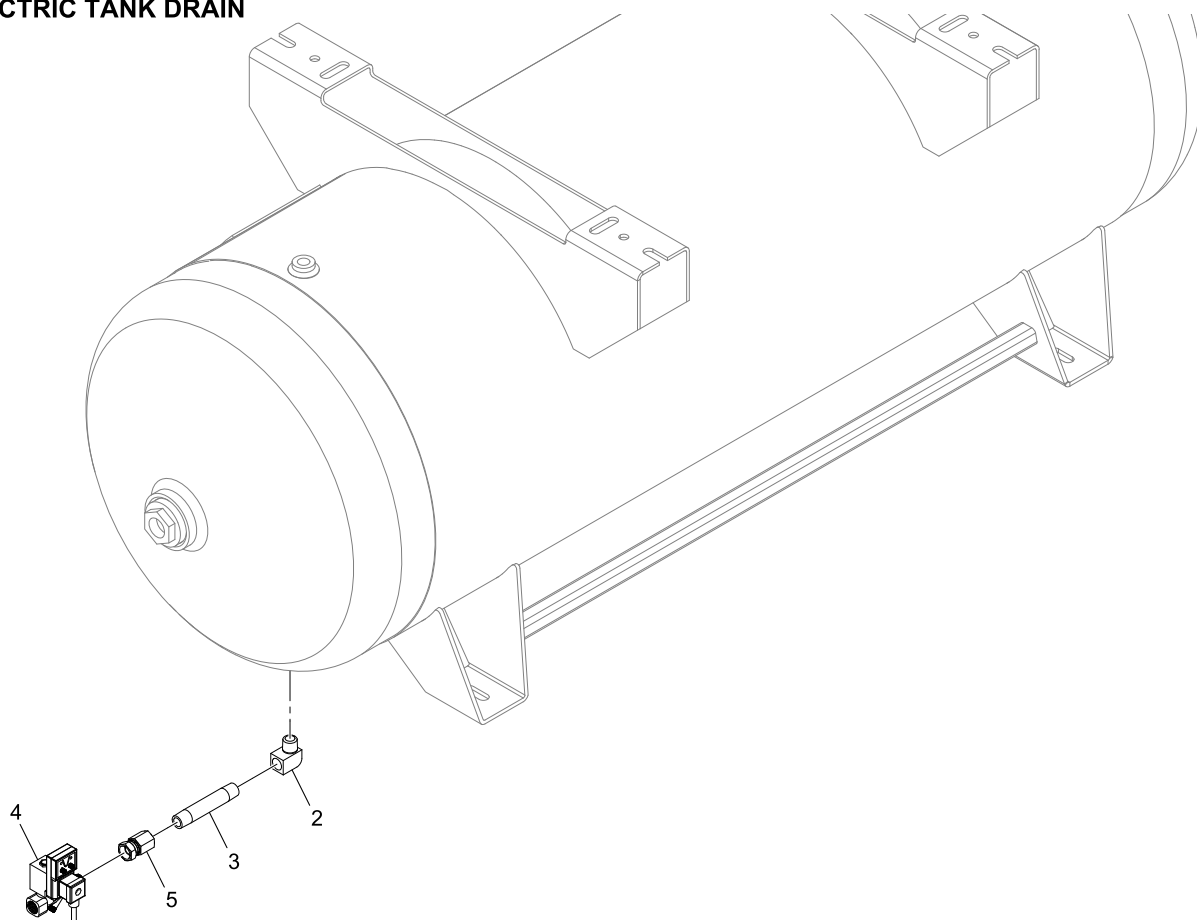
Item	Part No.	Description	Qty.
1	24364184	FAN, AXIAL, 1PH	1
	47814148001	FAN, AXIAL, 3PH	1
2	47499957001	GUARD, FAN	1
3	97170849	SCREW	4
4	96727573	WASHER, LOCK	4
5	14084123	WASHER	4
6	96704531	SCREW	8
7	302CAS393	GUARD, FAN	1
8	301CAS784	ENCLOSURE FAN FILTER ELEMENT	2

TANK DRAINS

MANUAL DRAIN



ELECTRIC TANK DRAIN

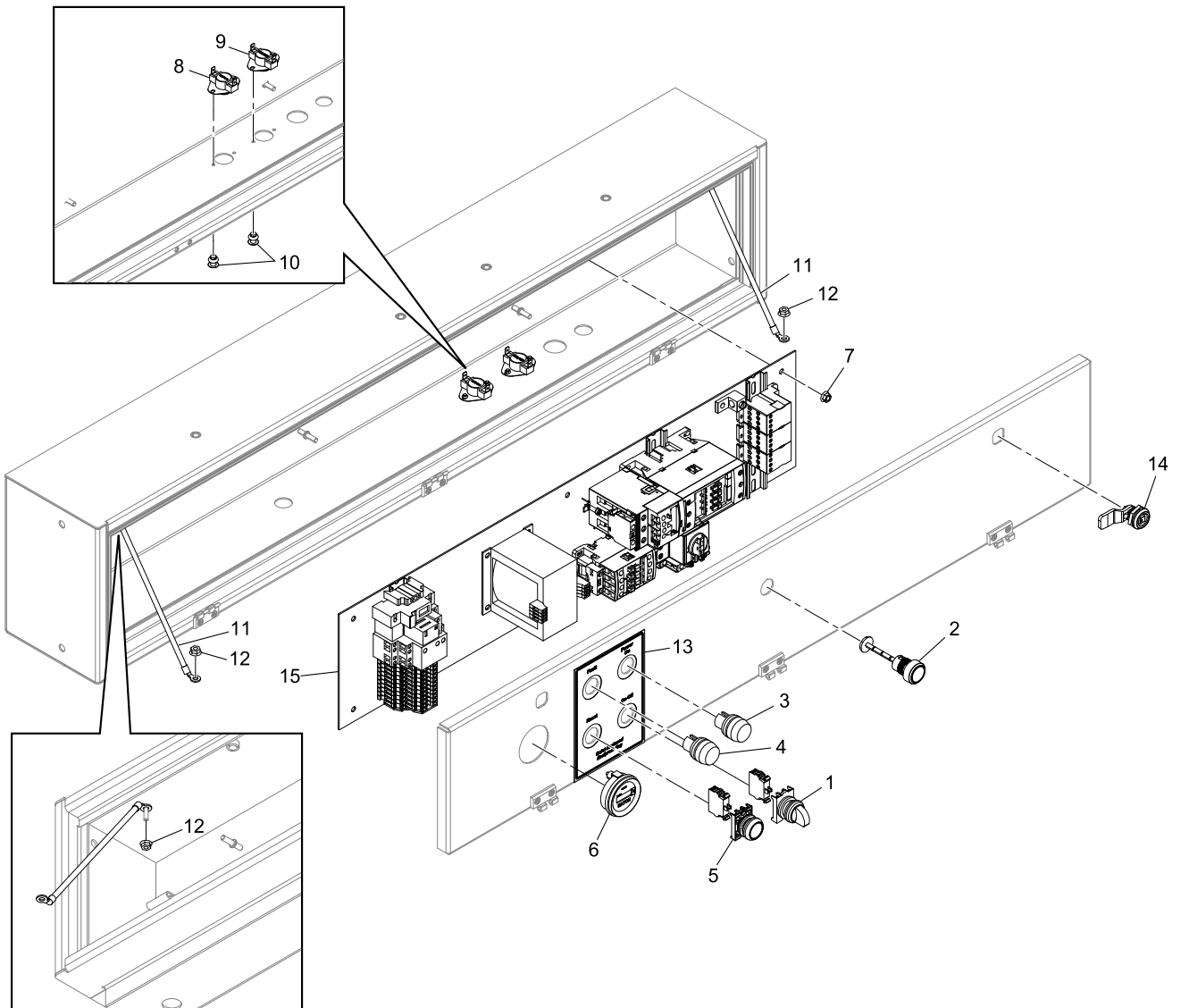


TANK DRAINS

Item	Part No.	Description	Qty.
MANUAL DRAIN			
1	32027120	VALVE, BALL	1

ELECTRIC TANK DRAIN (OPTIONAL)			
2	16545998	ELBOW	1
3	32237851	NIPPLE	2
4	47740586001	ELECTRIC DRAIN VALVE ASSEMBLY	1
5	47740587001	ADAPTER	1

CONTROL GROUP, START/STOP



CONTROL GROUP, START/STOP

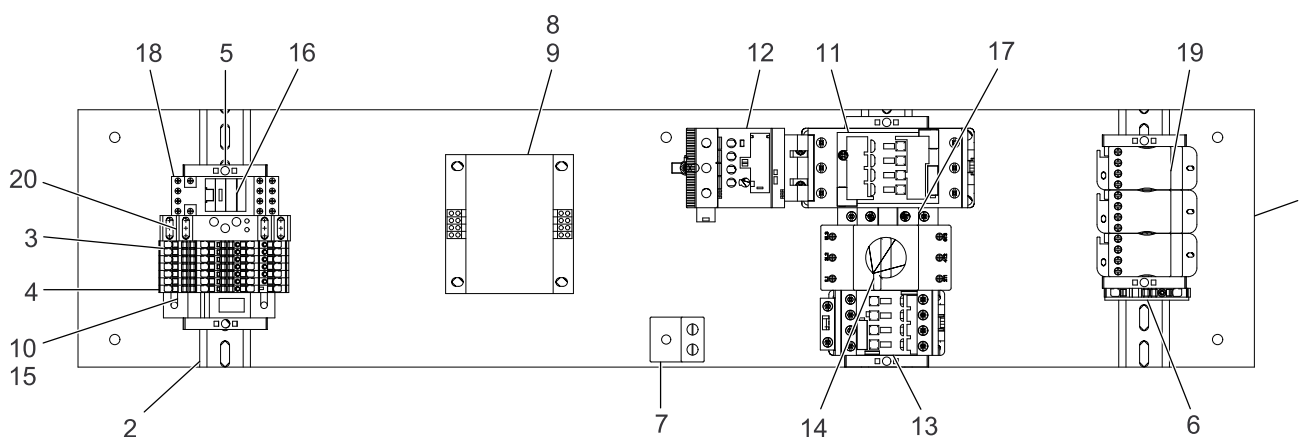
Item	Part No.	Description	Qty.
1	TEN001138	SWITCH, 2-POS	1
2	47772134001	RESET BUTTON, BLUE	1
3	47732501001	INDICATING LIGHT (GREEN)	1
4	47814090001	INDICATING LIGHT (RED)	1
5	VP1198199	PUSHBUTTON SWITCH	1
6	TEN001134	HOURMETER, 115V, N12	1
7	96737564	NUT, FLANGED	6
8	VP1229215	SWITCH, TEMPERATURE OPEN 140F ON RISE	1
9	VP1066869	SWITCH-TEMPERATURE CLOSE 120F ON RISE	1
10	70E13	RIVET .156DIA .126-.250 GRIP RANGE	4
11	VP1154868	CABLE, GROUND, 10AWG	2
12	50AW2	NUT	4
13	47814091001	DECAL,CONTROLS	1
14	23180565	LATCH, DOOR	2
15	See Table 5, p. 28	BACK PANEL ASSEMBLY	1
16**	M1787	TERMINAL, SOLDERLESS FLAG	4
17**	SS-9880	CABLE	5.0 FT

Note: ** Not shown on drawing

Table 5. Alternate Part Numbers

Application	Back Panel Assembly (#15)
5HP 575-3-60 (ODP/TEFC)	430CAB4016
5HP 460-3-60 (ODP/TEFC)	431CAB4016
5HP 230-3-60 (ODP/TEFC)	443CAB4016
5HP 200-3-60 (ODP/TEFC)	440CAB4016
5HP 230-1-60 (ODP)	439CAB4016
5HP 200-1-60 (ODP/TEFC)	432CAB4016
5HP 380-3-50 (ODP/TEFC)	438CAB4016
5HP 230-1-60 (TEFC)	434CAB4016
7.5HP 575-3-60 (ODP/TEFC)	429CAB4016
7.5HP 460-3-60 (ODP/TEFC)	442CAB4016
7.5HP 200/230-3-60 (ODP/TEFC)	441CAB4016
7.5HP 230-1-60 (ODP)	432CAB4016
7.5HP 380-3-50 (ODP/TEFC)	437CAB4016
7.5HP 230-1-60 (TEFC)	433CAB4016

BACK PANEL ASSEMBLY



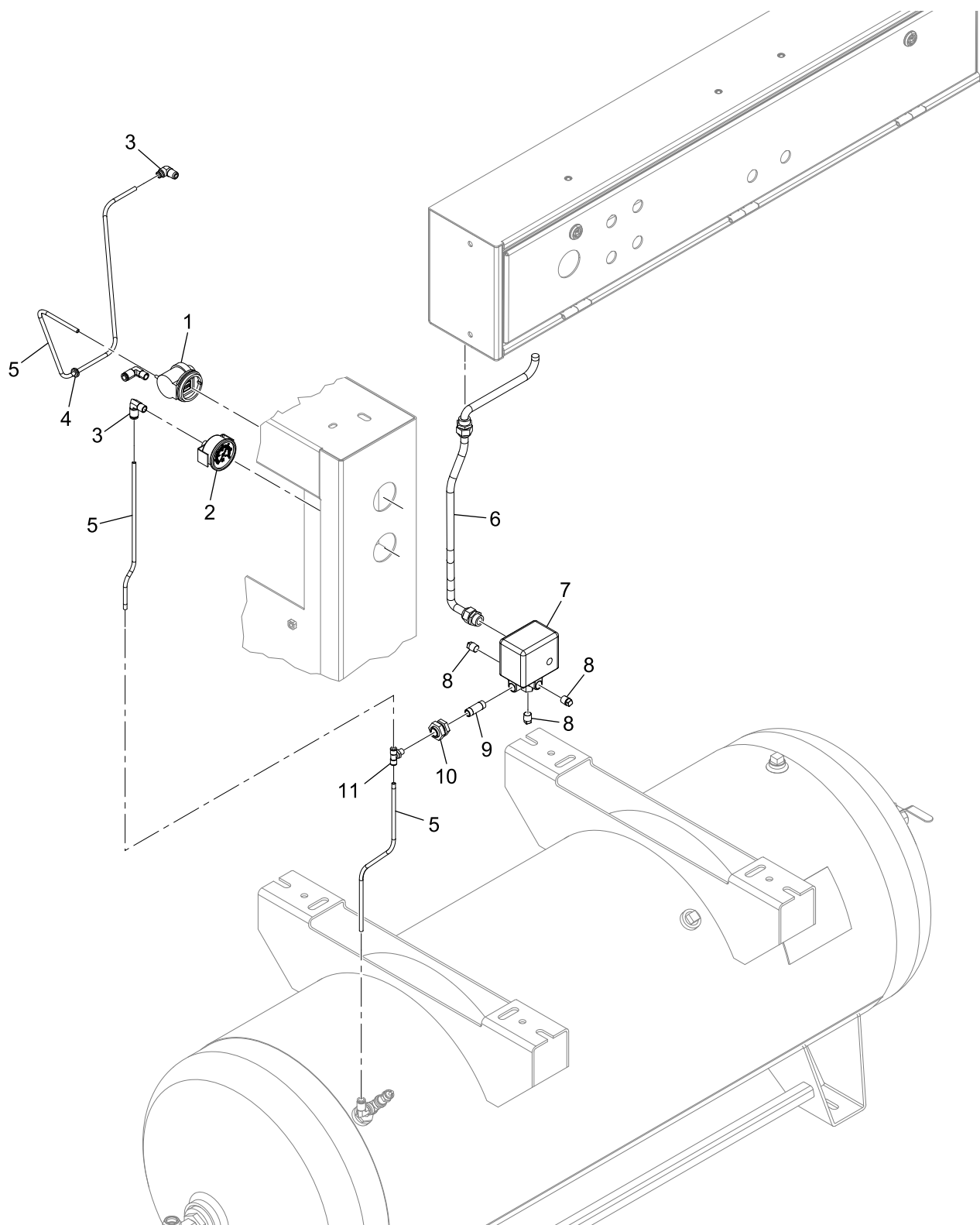
Item	Part No.	Description	Qty.
1	47775482001	PANEL, BACK	1
2	23464530UCV	RAIL, 35 MM DIN	0.267 FT
3	47601732001	TERMINAL, 2LEVEL, 2.5MM-800V-24A	6
4	47601734001	TERMINAL, 2LEVEL PE+PE, 2.5MM800V-24A	1
5	47601728001	STOP, TERMINAL	6
6	47601727001	PLATE, TERMINAL END	1
7	49089089	LUG, GROUNDING	1
8	See Table 6, p. 30	TRANSFORMER	1
9	81291601	FUSE .5 AMP CLASS CC TIME DELAY	2
10	22177307	FUSE, .75AMP CLASS CC TIME DELAY	1
11	See Table 6, p. 30	CONTACTOR	1
12	See Table 6, p. 30	RELAY, O/L	1
13	24469686	CONTACTOR, AF09, 1N/O AUX	1
14	See Table 6, p. 30	BREAKER	1
15	22859417	HOLDER- 1-POLE- 30A	1
16	47499674001	RELAY, 4P C/O 115VAC WITH SUPPRESSOR AND CLIP	1
17	See Table 6, p. 30	AUX CONTACT	1
18	47499669001	BASE, RELAY	1
19	23056328	BLOCK, POWER 1-POLE 600V 85A - ERICO UD80A	3
20	22837058	RELAY, TIME DELAY	1
21*	47601730001	JUMPER, TERMINAL, 4/2 - 32A	1
22*	47775485001	HARNESS, WIRE QE	1
23*	47775486001	LABEL, BACKPANEL	1
24*	See Table 6, p. 30	TRANSFORMER	1

Note: * Not shown on drawing

BACK PANEL ASSEMBLY**Table 6. Alternate Part Numbers**

Application	Transformer (#8)	Contactora (#11)	Relay, O/L (#12)	Breaker, Motor (#14)	Contact, Aux (#17)	Transformer (#24)
5HP 575-3-60 (ODP/TEFC)	47518259001	24469686	47499663001	24592586	49018914	24592594
5HP 460-3-60 (ODP/TEFC)	47518259001	-	47499663001	24592586	24474116	-
5HP 230-3-60 (ODP/TEFC)	47518259001	24469702	47499684001	24592586	24474116	-
5HP 200-3-60 (ODP/TEFC)	47518259001	24469710	47526211001	24592586	24474116	-
5HP 230-1-60 (ODP)	47518259001	24469728	47526212001	24482796	24474116	-
5HP 200-1-60 (ODP/TEFC)	47518259001	24738940	47607712001	24482796	24474173	-
5HP 380-3-50 (ODP/TEFC)	47499667001	24469694	47499681001	24592586	24474116	-
5HP 230-1-60 (TEFC)	47518259001	24469702	47505664001	24482796	24474116	-
7.5HP 575-3-60 (ODP/TEFC)	47518259001	24469686	47499681001	24592586	24474116	24592594
7.5HP 460-3-60 (ODP/TEFC)	47518259001	24469694	24469694	24592586	24474116	-
7.5HP 200/230-3-60 (ODP/TEFC)	47518259001	24469710	47505664001	24592586	24474116	-
7.5HP 230-1-60 (ODP)	47518259001	24738940	47607712001	24482796	24474173	-
7.5HP 380-3-50 (ODP/TEFC)	47499667001	24469702	47504390001	24592586	24474116	-
7.5HP 230-1-60 (TEFC)	47518259001	24738924	47607713001	24482796	24474173	-

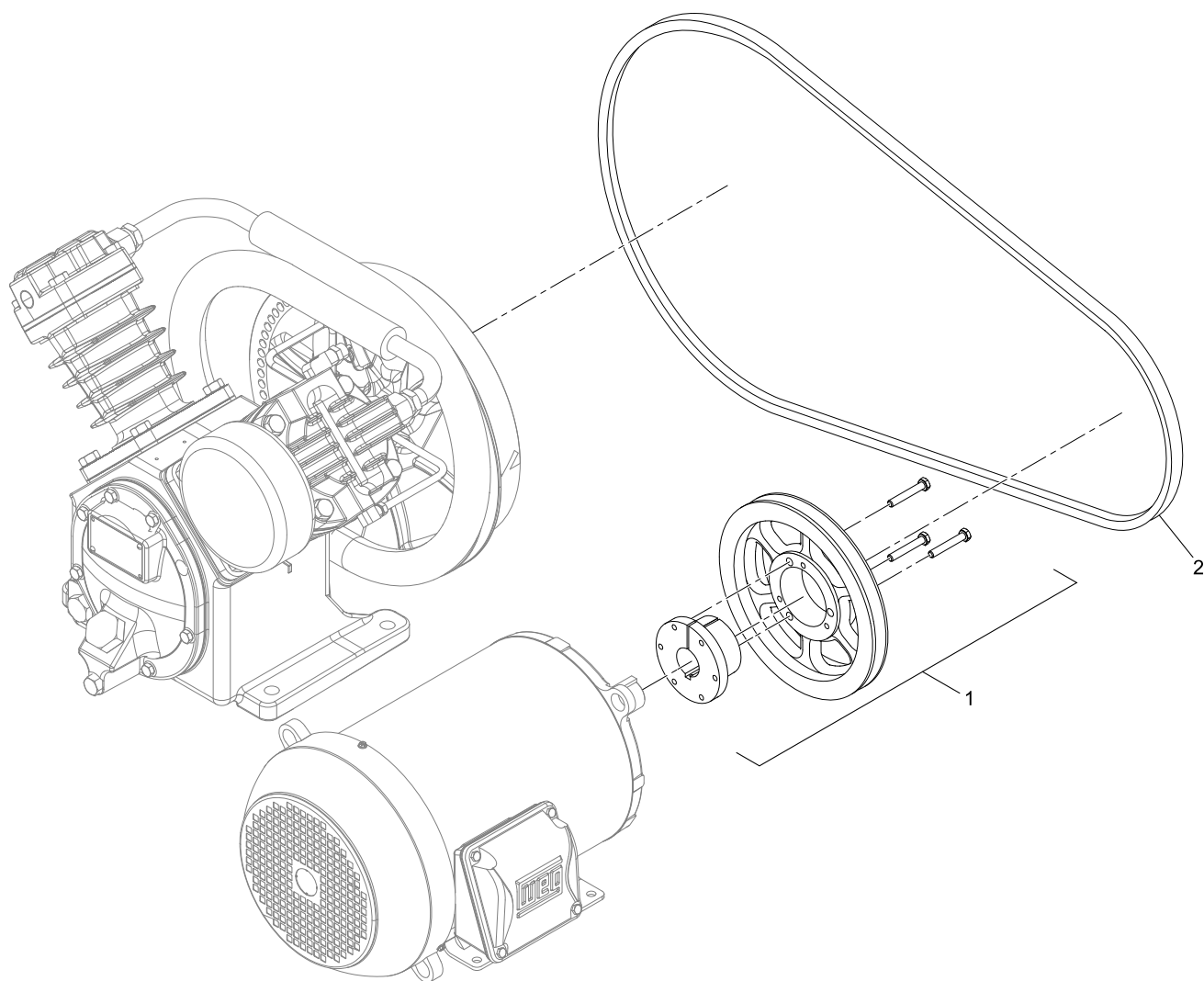
CONTROL GROUP, GAUGES



CONTROL GROUP, GAUGES

Item	Part No.	Description	Qty.
1	VP1043166	GAUGE, FILTER	1
2	VP1043155	GAUGE, PRESSURE, 300PSI	1
3	39155478	ELBOW	2
4	VP1029921	GROMMET, RUBBER	1
5	97265912	TUBING, PLASTIC	4.5FT
6	32269029	CABLE, PRESSURE SWITCH	4.5FT
7	23474570	SWITCH, PRESSURE, 175PSI	1
8	95928230	PLUG	3
9	91896480	NIPPLE	1
10	M3498	COUPLING, BULKHEAD	1
11	47809102001	TEE	1

TRANSMISSION GROUP



TRANSMISSION GROUP

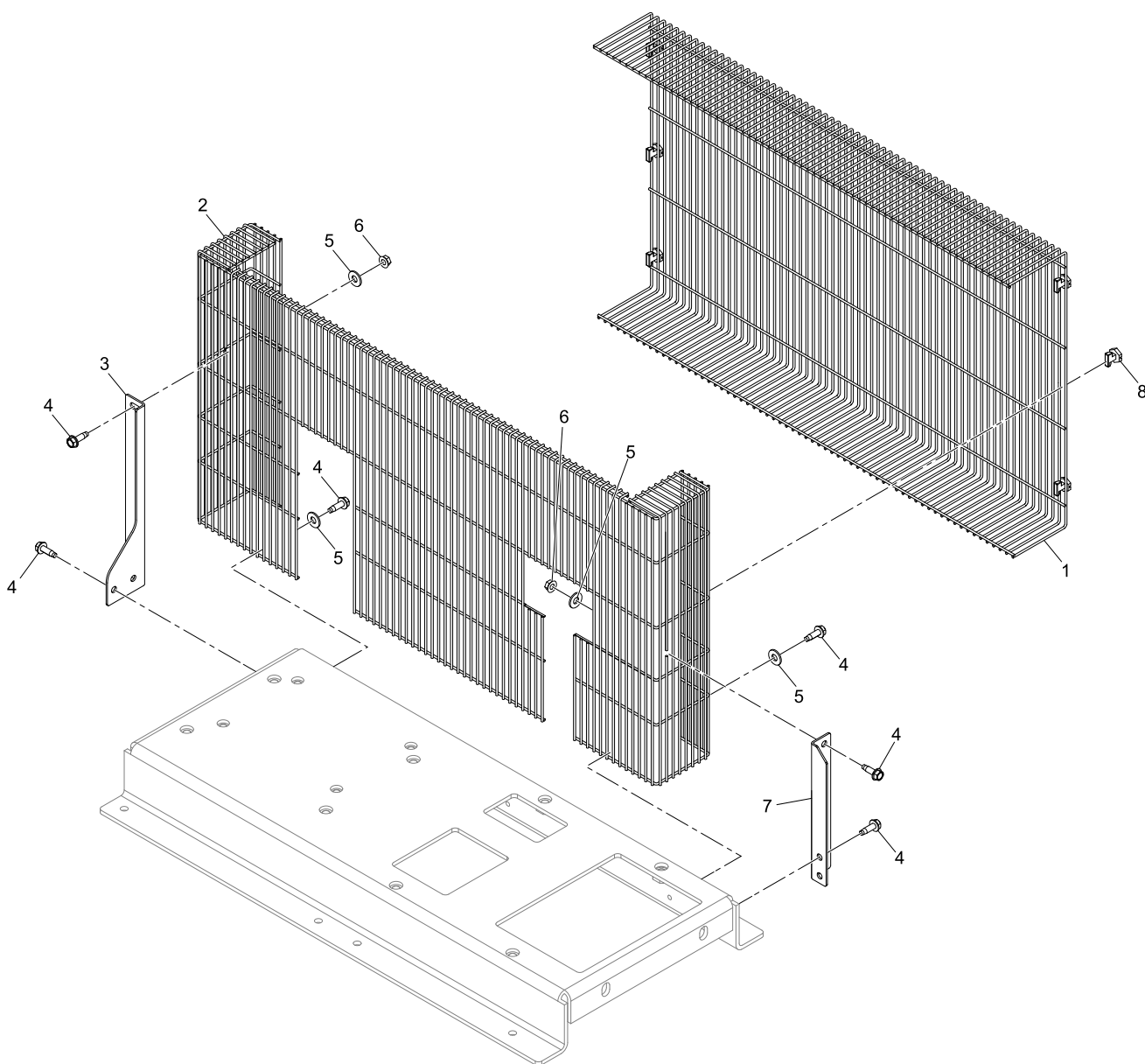
Item	Part No.	Description	Qty.
TRANSMISSION GROUP - 5 HP, 60HZ			
1	32281768	PULLEY	1
2	95099503	V-BELT	1

TRANSMISSION GROUP - 7.5 HP, 60HZ			
1	56271406	SET-SHEAVE, TEFC	1
	54507967	SET-SHEAVE, 3PH ODP	1
	54507975	SET-SHEAVE, 1PH ODP	1
2	95677324	V-BELT, TEFC	1
	95099495	V-BELT, 3PH ODP	1
	95099495	V-BELT, 1PH ODP	1

TRANSMISSION GROUP - 5 HP, 50HZ			
1	32300014	SET-SHEAVE	1
2	95099503	V-BELT	1

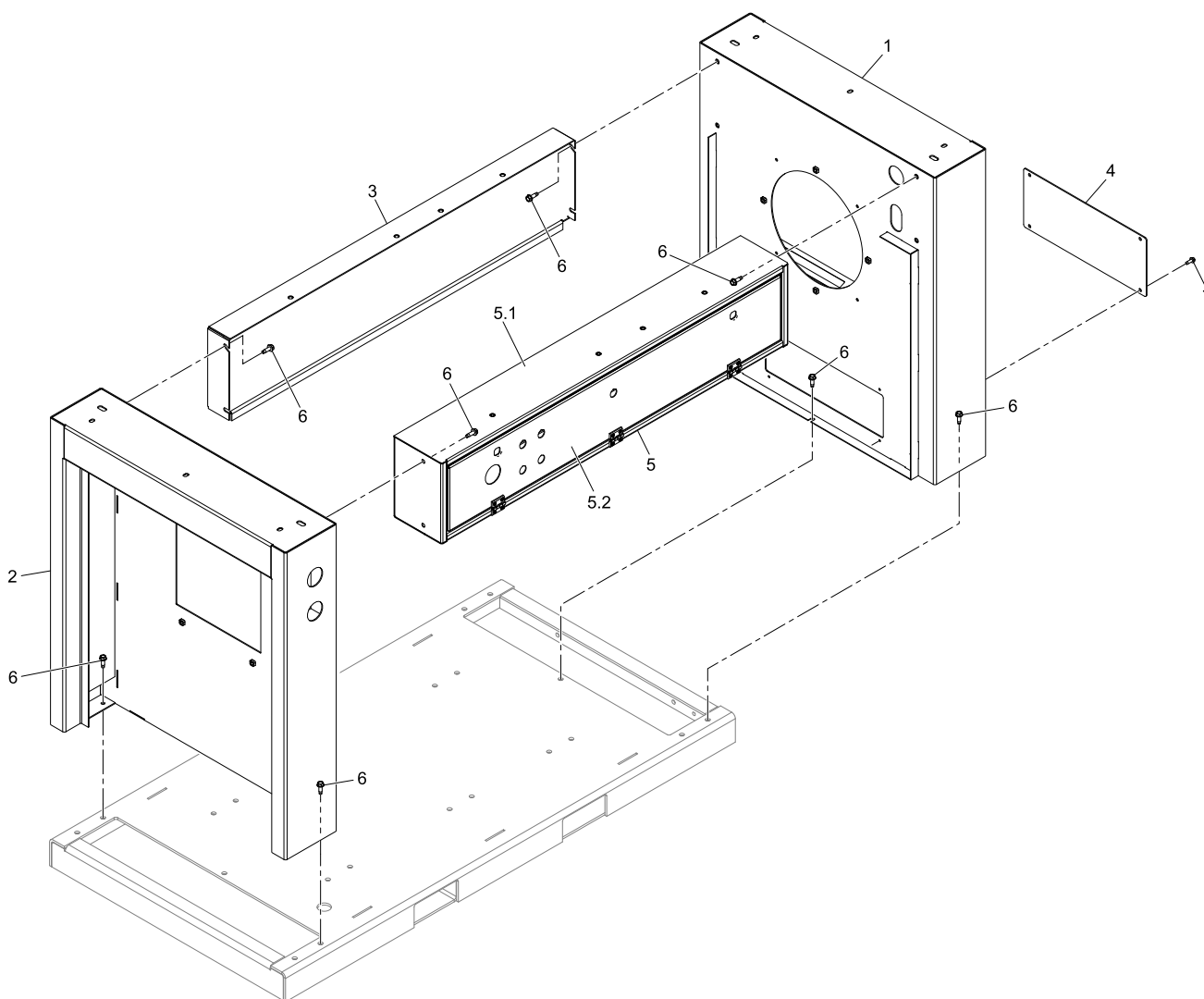
TRANSMISSION GROUP - 7.5 HP, 50HZ			
1	97332639	SET-SHEAVE	1
2	95099495	V-BELT	1

BELT GUARD



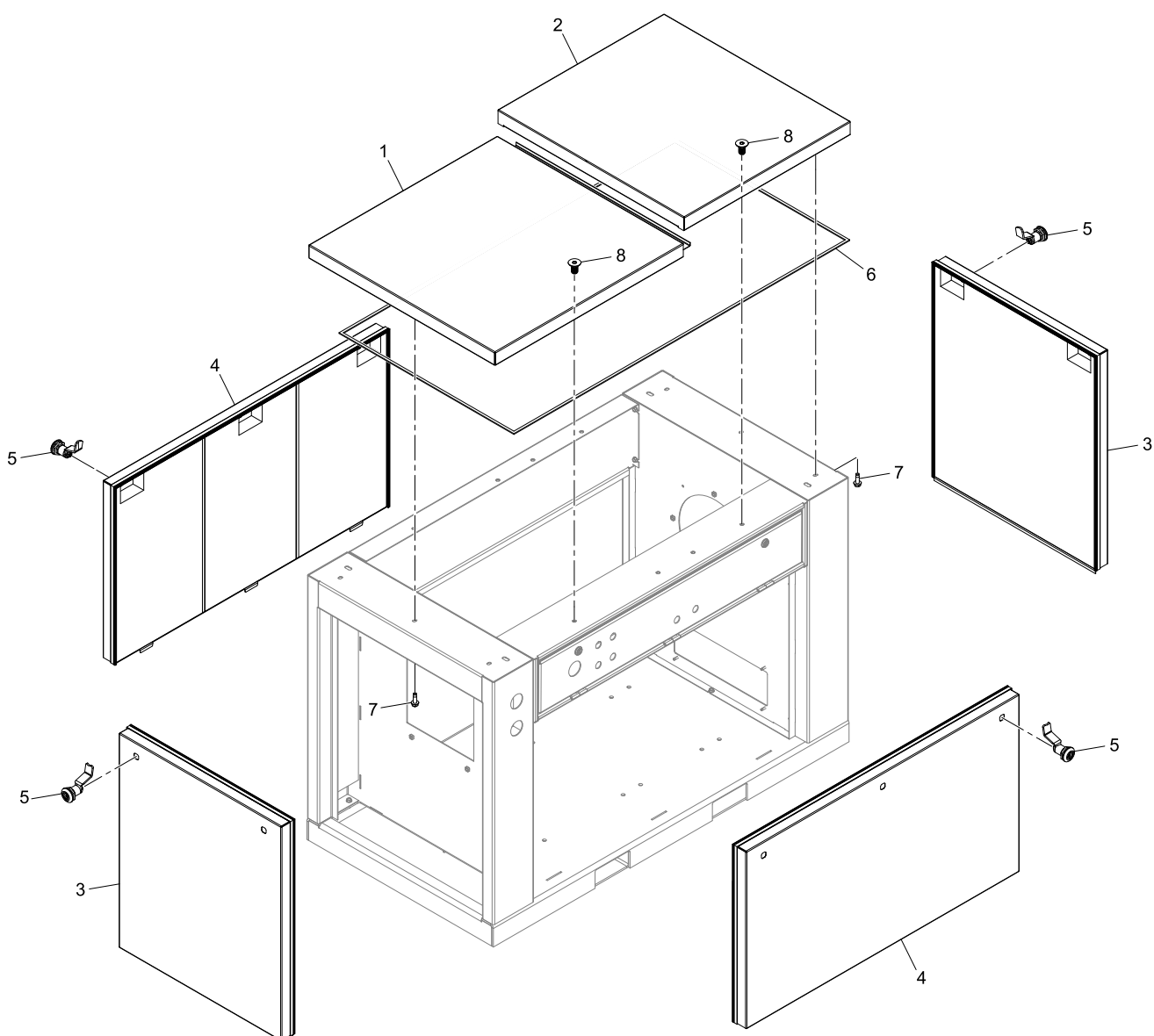
Item	Part No.	Description	Qty.
1	47759961001	BELT GUARD, FRONT	1
2	47759962001	BELT GUARD, OUTSIDE	1
3	340CAS017	BRACKET, BELT GUARD	1
4	97170849	SCREW	9
5	32285892	WASHER	4
6	39128558	NUT	2
7	343CAS017	BRACKET, BELT GUARD	1
8	EG-9932	CLIP, BELT GUARD	4

ENCLOSURE FRAME



Item	Part No.	Description	Qty.
1	321CAS314-IR	FRAME, END INLET	1
2	323CAS314-IR	FRAME, END DISCHARGE	1
3	308CAS314-IR	FRAME, TOP RAIL	1
4	301CAS225	COVER, ACCESS	1
5	312CAS379-IR	ENCLOSURE, CONTROL BOX	1
5.1	ADK05904670	CONTROL BOX	1
5.2	ADK05908843	COVER, CONTROL BOX	1
6	97170849	SCREW	18
7	32187056	SCREW	4

ENCLOSURE PANELS



Item	Part No.	Description	Qty.
1	306CAS379-IR	ENCLOSURE, COVER	1
2	317CAS379-IR	ENCLOSURE, COVER	1
3	307CAS379-IR	ENCLOSURE, END PANEL	2
4	308CAS379-IR	ENCLOSURE, SIDE PANEL	2
5	47762997001	LATCH, DOOR	10
6	85038412	SEAL	17
7	97170849	SCREW	7
8	VP1229091	SCREW	8

Notes
